

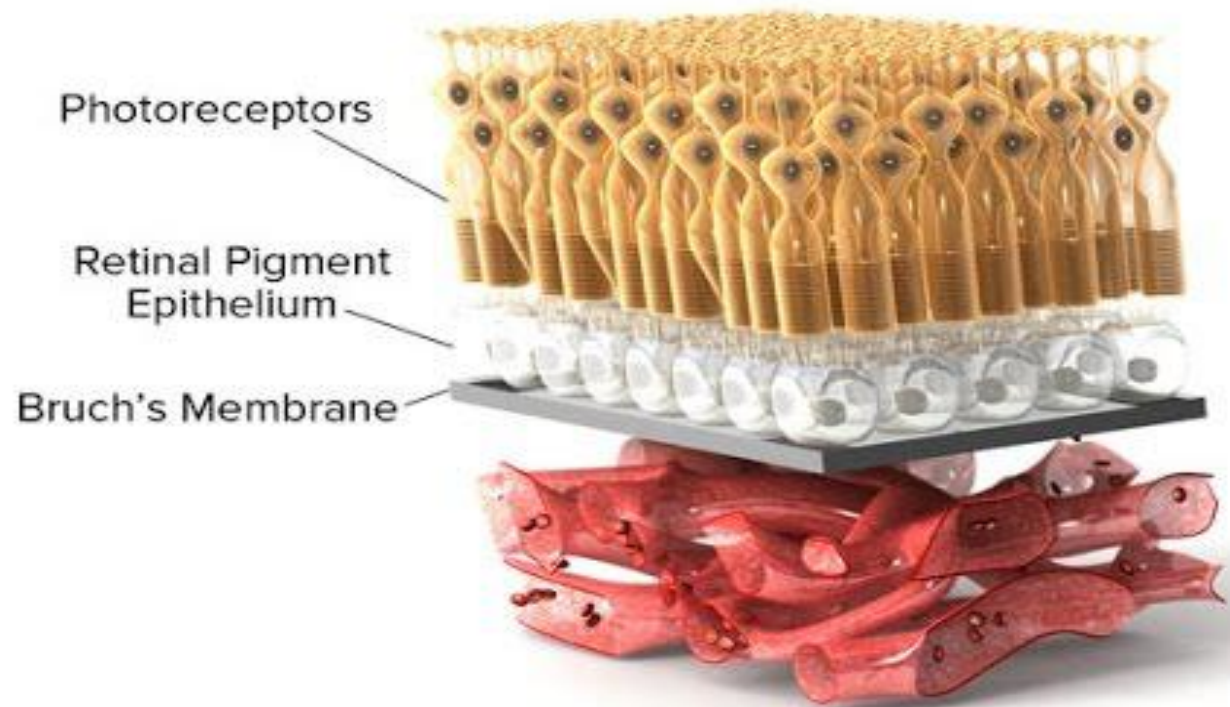


Creative Bioarray

CLG9FIAG B109LLSA

Human Retinal Pigment Epithelial Cells

Human Retinal Pigment Epithelial Cells (HRPEpiC) are isolated from human retina. HRPEpiC are cryopreserved at passage one and delivered frozen. Each vial contains $>5 \times 10^5$ cells in 1 ml volume. HRPEpiC are characterized by immunofluorescent method with antibodies to cytokeratin-18, cytokeratin-19 and fibronectin. HRPEpiC are negative for HIV-1, HBV, HCV, mycoplasma, bacteria, yeast and fungi. HRPEpiC are guaranteed to further expand for 15 population doublings in the condition provided by Creative Bioarray.



Contact information

Provider: [Creative Bioarray](#)

URL: <http://www.creative-bioarray.com/Human-Retinal-Pigment-Epithelial-Cells-CSC-C1530-item-39346.htm>

Address: 45-1 Ramsey Road, Shirley, NY 11967, USA

Phone No. 1-631-619-7922